

NV LP-Gas Board Class 2B License (LP-Gas Cylinder Exchange) Site Plan

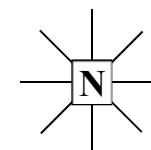
Licensee Name: \_\_\_\_\_ Equipment Supplier: \_\_\_\_\_

Installation Address: \_\_\_\_\_

Person Completing This Form: \_\_\_\_\_ E-mail: \_\_\_\_\_

*Inspectors Approval*

(Please accurately detail the proposed installation showing all separation distances, cross streets, and North orientation)



**NV LP-Gas Board Class 2B License (LP-Gas Cylinder Exchange) Site Plan**

Licensee Name: \_\_\_\_\_

Address: \_\_\_\_\_

*DO NOT WRITE IN THIS COLUMN - Inspector will complete during inspection*

<i>Line</i>	<b>NFPA 58 (2020)</b>	<b>CABINET SIZE AND LOCATION</b>					
1	8.4.2.2(2)	Number of cylinder exchange storage cabinets.					
2	7.4.2.2	Cylinder propane capacity (20 lb, 30 lb, etc.). <sup>1</sup>	lb	lb	lb	lb	
3	8.4.2.2(2)	Cabinet cylinder storage capacity (12, 18, etc.). <sup>2</sup>					
4		TOTAL aggregate storage capacity of this installation in pounds. <sup>3</sup>				lbs	
5	8.4.1.1 (1)	Separation distance from any doorway where occupants have at least two means of egress.				ft	
6	8.4.1.1 (2)	Separation distance from any doorway in building that has only one means of egress.				ft	
7	8.4.1.1 (3)	Separation distance from any automotive service station fuel dispenser.				ft	
8	8.4.1.2 (1)	Separation distance from nearest important building or group of buildings. <i>(if against the building enter "0 ft.")</i>				ft	
9	8.4.1.2 (2)	Separation distance from line of adjoining property that can be built upon.				ft	
10	8.4.1.2 (3)	Separation distance from busy thoroughfares or sidewalks on other than private property.				ft	
11	8.4.1.2 (4)	Separation distance from line of adjoining property utilized for public gathering (church, school, etc.).				ft	
12	8.4.1.2 (5)	Separation distance from a LP-Gas dispensing station.				ft	

	<b>NFPA 58 (2020)</b>	<b>FIRE EXTINGUISHER</b> <i>(required for all installations in excess of 720 lb. aggregate capacity)</i>		
13	8.5.1, 8.5.2	Dry chemical rating (A, B, C, D, etc.) and capacity in pounds.	Rating:	lbs
14	8.5.3	Distance from cabinets to code compliant fire extinguisher.		ft

	<b>NFPA 58 (2020)</b>	<b>VEHICLE PROTECTION</b>		
15	8.4.2.2	Are the cylinders in a lockable ventilated enclosure of metal exterior construction OR is the vehicle barrier protection (VBP) plan detailed on the plot plan? <i>(required)</i>	Y	N

	<b>NAC</b>	<b>CLEARANCE AND MARKINGS</b>		
16	NAC 590.456(1)	What is the minimum clearance that will be maintained around the cabinet or groups of cabinets?		ft
17	NAC 590.456(3)(b)	Are there "NO SMOKING", "FLAMMABLE", and "PROPANE" signs on the front of each cabinet?	Y	N
18	NAC 590.456(3)(c)	Is the telephone number to report emergencies posted on the front of each cabinet?	Y	N

<sup>1</sup> The propane capacity of the cylinder is the MAXIMUM permitted filling level of the cylinder as defined in NFPA 58 (2020) 7.4.2.2. (WC \* 42%)

<sup>2</sup> This is the intended maximum cylinder capacity the manufacturer designed the cabinet to contain.

<sup>3</sup> Total number of cylinder exchange cabinets multiplied by the maximum cylinder capacity of each cabinet.